

Riverwood Lofted

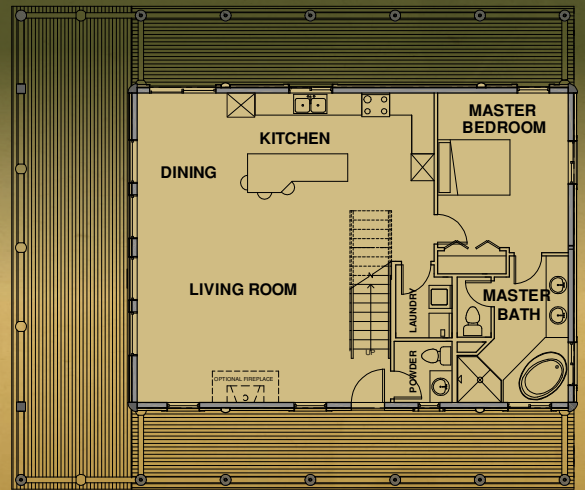


Riverwood Lofted SPECIFICATIONS

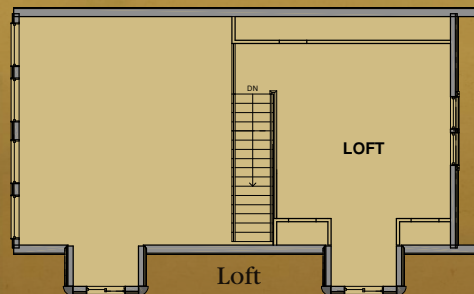
Outside Dimension	40' x 29'
Square Footage of Main	1,160 sq. ft.
Square Footage of Loft	318 sq. ft.
Total Square Footage	1,478 sq. ft.

Whisper Creek understands that nothing adds to a home's beauty and functionality more than smart and affordable finishing options. Our homes are designed for both functionality and economy. Additional value can be added to many of our homes by simply adding a loft or basement. Finish your home with the choice of Round, Square or Timber Craftsman style logs and accents.

*What are you waiting for?
Stop dreaming. Start building.*



Main Level



*View our
entire selection
of floorplans
online at
wclb.com*



**WHISPER
CREEK** LOG HOMES

www.whispercreekloghomes.com

Riverwood Lofted